



**ALAMEDA COUNTY  
TRANSPORTATION COMMISSION**

# Agency Construction Manager

**HR26-06**

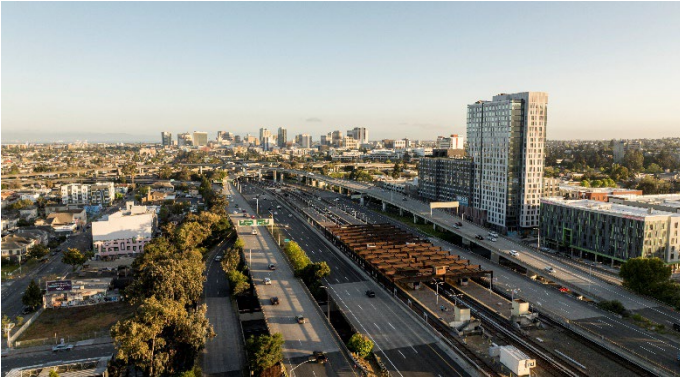
## DEADLINE TO APPLY

This recruitment will remain open until filled. Candidates are encouraged to apply early in the process for optimal consideration.

**The first review of resumes will take place on July 6, 2026.**

## THE OPPORTUNITY

As a member of the Management Team at Alameda County Transportation Commission under the Deputy Executive Director of Projects this position serves as the “Single Focal Point” for the Agency’s Capital Construction Program delivery efforts. This position will direct, lead and oversee all aspects of construction project delivery.



## THE ORGANIZATION

Alameda CTC is a joint powers authority that plans, funds and delivers transportation programs and projects that expand access and improve mobility in Alameda County. Alameda CTC was created by the merger of the Alameda County Congestion Management Agency and the Alameda County Transportation Improvement Authority to allow for better coordination of transportation planning and programming within the County, as well as position Alameda County jurisdictions and transit agencies to better compete for limited state and federal transportation dollars.

**Together, We Deliver Excellence.** Alameda CTC is invested in making a positive impact. Our staff values a nurturing environment with visionary thinking to deliver our mission. We embrace the diversity of our vibrant teams and actively collaborate toward our common goals. Staff at Alameda CTC advance inclusivity and trust through open, honest, and respectful communication. Our culture is built together, day by day, in every action we take.

**We Are, Who We Serve.** Alameda CTC is committed to serving the people of Alameda County. We aspire to be people-centric by celebrating those who bring their authentic selves to work, and we support the needs of our very diverse communities. We strive to cultivate opportunities that address historical inequities by inviting and engaging multiple perspectives. We set the standard for diversity, equity, and inclusion and our leadership cultivates a workplace that empowers staff to reach their potential.

**Equity.** Alameda CTC recognizes inequities in marginalized communities and is committed to advancing racial, socio-economic, and environmental justice to maintain the diversity of our communities. Alameda CTC adopts and implements deliberate policies, systems, and actions to deliver transportation funding, projects and programs that result in more equitable opportunities and positive outcomes for marginalized communities.

## THE AREA



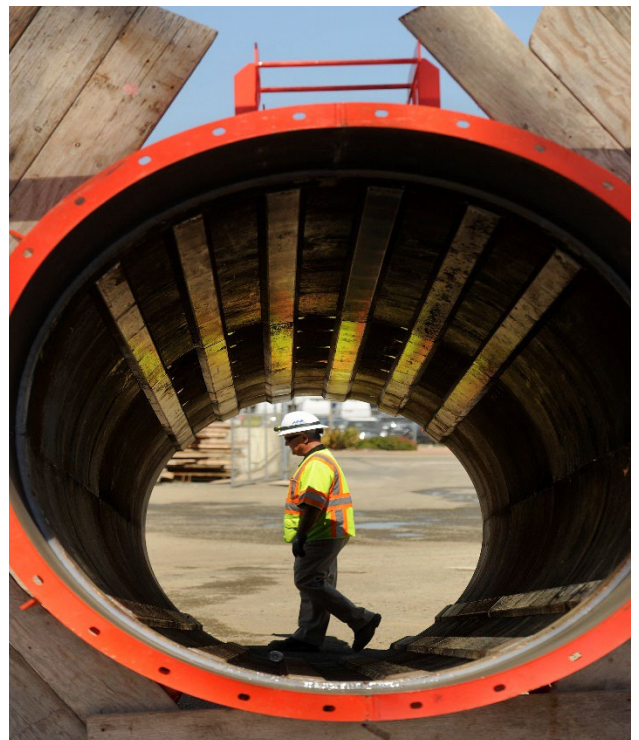
Alameda County is the geographic center of the San Francisco Bay Area, located east of the San Francisco Bay, extending to Livermore in the East and from Albany in the North to Fremont in the South. Alameda County encompasses 821 square miles of land and has a population in excess of 1.6 million, making it the second most populated county in the Bay Area.

## THE IDEAL CANDIDATE WILL

- Have experience overseeing and strategically leading the construction development and delivery of a large capital transportation construction program.
- Possess a thorough understanding of current transportation funding practices, procedures, and policies at the Federal, State, regional, and local levels.
- Have comprehensive experience leading multi-disciplinary project teams of in-house and consultant staff in delivery of the capital construction program.
- Be a good steward of Alameda County Transportation Commission resources.
- Have proven ability in successfully managing complex construction projects including claim avoidance and resolution.
- Have knowledge and experience in alternative construction delivery methods.
- Have a thorough understanding of risk management and construction budgeting.
- Have a thorough understanding of Caltrans construction practices.

## EXAMPLE OF ESSENTIAL RESPONSIBILITIES

- Serve as the "Single Focal Point" for the Agency's Capital Construction Program delivery efforts encompassing all work from pre-construction activities through project close-out.
- Deliver Alameda CTC's construction program with a focus on maintaining scope, schedule and budget.
- Evaluate alternatives, make sound recommendations, and prepare effective technical reports.
- Works with the Deputy Executive Director of Projects to provide regular reports to the Executive Director and Chief Deputy Executive Director on the status of the Agency's construction program.
- Monitor changes in the laws, regulations, and technology that may affect the Agency and/or its operations; implement policy(s) and procedural change(s) as required.
- Direct and coordinate the implementation of Agency's goals, objectives, policies, procedures, and work standards.
- Effectively represent the Agency with governmental agencies, community groups, various businesses, professional and regulatory organizations, and individuals in project meetings.
- Plan, organize, coordinate, and direct the work of management, supervisory, professional, and technical personnel; delegate authority and responsibility.
- Select, train, motivate, and direct the work of in-house and consultant staff; evaluate and review work for acceptability and conformance with Agency standards, including project priorities.
- Work with staff on performance issues; implement discipline and termination procedures; respond to staff questions and concerns, establish, maintain, and foster positive effective working relationships with staff to deliver the construction program.
- Present to the ACTC Board the status of projects under construction and overall construction program in support of the Executive Director.



## QUALIFICATIONS

- Equivalent to graduation from an accredited four-year college or university with major coursework in construction management, construction science, civil engineering, architecture or a related field.
- Fifteen (15) years of increasingly responsible experience in construction engineering and related activities.
- Seven (7) years of managerial/supervisory construction experience.
- Possess and maintain a professional license as a Civil Engineer in the State of California.

## COMPENSATION AND BENEFITS

**The annual salary range is \$217,342 to \$282,544 depending on qualifications and experience.**

Alameda County Transportation Commission offers a generous benefits package including:

- Cafeteria Plan which employees can use to choose the following:
  - Health, Dental, and Vision Insurance; and
  - Life, AD&D, and Long-term and Short-Term Disability Insurance.
- Retirement Program in the California Public Employee Retirement System (CalPERS):
  - Classic Member (member of CalPERS prior to January 1, 2013) – 2.5% at age 55 (employee contributes 3%)
  - New Member (under PEPPA laws) – 2% at age 62 (employee contributes 7.75%, this amount is subject to change at the beginning of each fiscal year per CalPERS calculations)
- Vacation Leave: Starts at 10 days per year and increases based on years of service and is negotiable at the Executive Director's discretion.
- Sick Leave: Accrued at one (1) day per month.
- Holidays: 11 paid holidays, plus three (3) floating holidays, per year.
- Other benefits include transit subsidy, flexible spending accounts, 457 retirement plan, tuition assistance, etc.

## TO APPLY

To apply for this opportunity, please visit the Alameda CTC website and download an application at: [www.alamedactc.org/get-involved/careers-jobs/](http://www.alamedactc.org/get-involved/careers-jobs/)

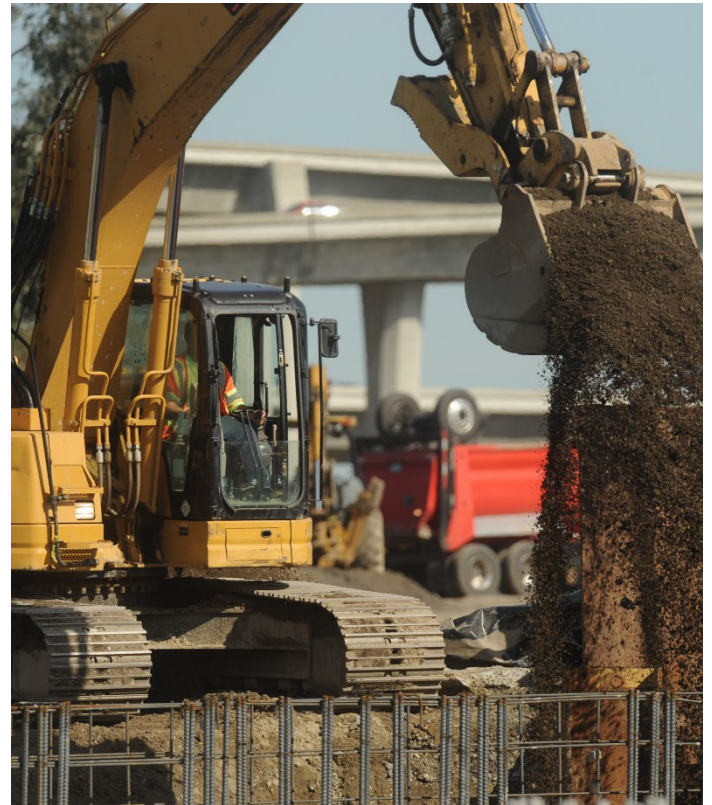
**Complete application packets must include a cover letter, resume, and application.**

Application packets may be sent by email to: [recruitment@alamedactc.org](mailto:recruitment@alamedactc.org). Alternatively, you can mail a completed application packet to:

**Attn: Recruitment  
Alameda CTC  
1111 Broadway, Suite 800  
Oakland, CA 94607**

**Incomplete applications will not be considered.**

This recruitment will remain open until filled; however, candidates are encouraged to apply early in the process for optimal consideration. The first review of application packets will take place on July 6, 2026.



Alameda CTC is an equal opportunity employer encouraging workforce diversity and is committed to ensuring that no person is excluded from participation in, denied the benefits of, or discriminated against under its hiring activities on the basis of race, color, creed, sex, gender, religion, marital status, registered domestic partnership status, age, national origin or ancestry, physical or mental disability, veteran status, sexual orientation, gender identity/gender expression, or medical condition including genetic characteristics.

Title VI of the Civil Rights Act of 1964 provides protections against discrimination based on race, color and national origin; and 49 United States Code Section 5332 provides additional protections against discrimination based on religion, national origin, sex, disability, or age.

Employment at Alameda CTC is at-will.

The information contained herein does not constitute either an expressed or implied contract, and these provisions are subject to change.

